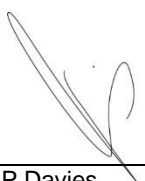


CERTIFICATE OF ANALYSIS

Product: **MG-LZ8 - Reishi / Lingzhi Mushroom**
 Botanical/Plant Material: **Ganoderma lucidum**
 Manufactured by: **Mushroom Guru (Pty) Ltd**
 Production Date: **07 July 2017**
 Expiration Date: **07 July 2019**
 Lot Number: **DV MGLZ8-WH: 01-07/17**
 Country of Origin: **South Africa**
 Harvesting protocol: **In accordance with the conservation control authority of South Africa**

PARAMETER	SPECIFICATION	METHOD	RESULT
Plant Part Used:	Antler	Visual	Pass/Verified
Appearance:	±400mm straight elongated stem ±12mm in diameter	Visual	Pass/Verified
Colour:	Characteristic	Visual	Pass/Verified
Odour and Taste:	Odour and Taste Characteristic	Organoleptic	Pass/Verified
Plant / Extract Fraction:	N/A	S/L	Pass/Verified
Active Ingredient:	All Fractions including Ganoderic Acids, Polysaccharides, sterols, mannose, glucose & Beta-glucans	HPLC	Pass/Verified
Excipient:	None	3 rd party CoA	Pass/Verified
Solubility:	N/A	Physical	Pass/Verified
Moisture:	NMT 12%	AOAC 950.46	11.2%
TLC [Thin layer Chromatography]:	As per Reference Standard	TLC	Pass/Verified
Particle / Mesh Size:	Whole Antler	Visual	Complies
Heavy Metals – Lead:	< 3.0ppm	AOAC 984.27	0.171ppm
– Cadmium:	< 1.0ppm	AOAC 984.27	0.018ppm
– Mercury:	< 0.10ppm	AOAC 984.27	0.002ppm
Coliforms:	< 10cfu/g	ISO 4832	Non-detected
Total aerobic count:	< 10 000cfu/g	MFHPB-18	Complies
Yeast and Mould:	< 100cfu/g	AOAC 6.1:1997	Complies
Escherichia Coli:	Absent	ISO 16649-2	Non-detected
Staph. Aureus:	Absent	ISO 6888-2	Non-detected
Salmonella:	Absent	SANS 6579:2003	Non-detected
Storage and Handling:	Closed, sealed storage container. Cool and dry conditions – less than 23° C This product is non-GMO		

Please keep dry and away from direct sunlight!

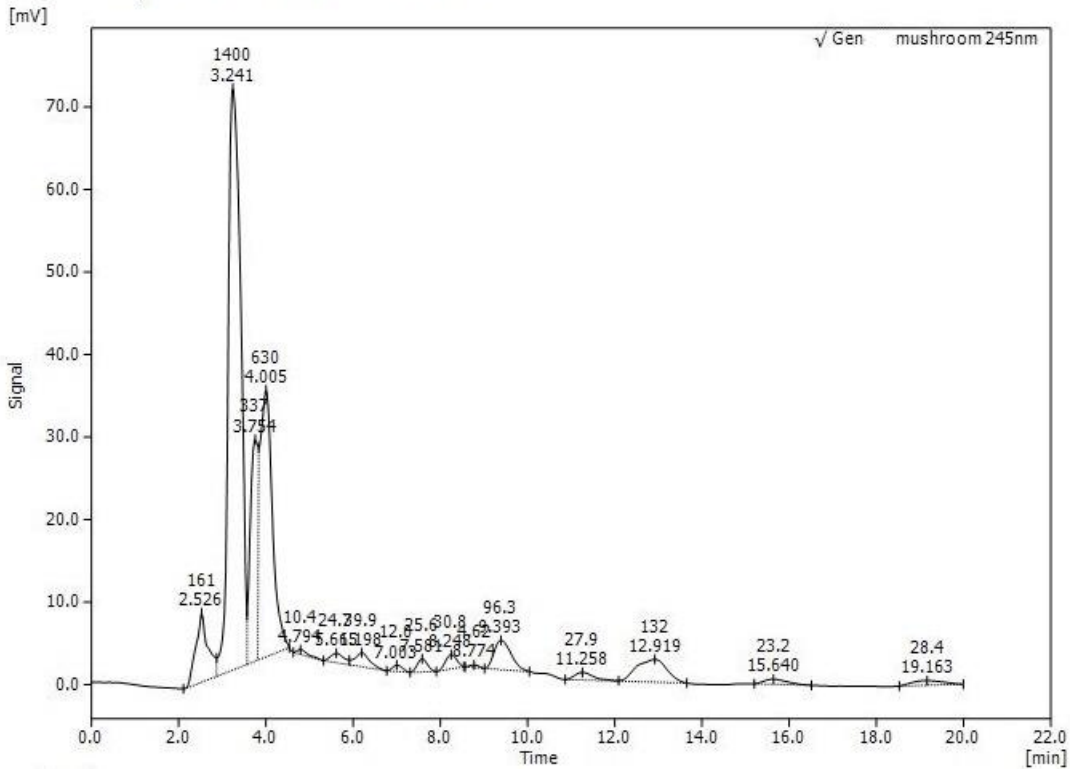

 R P Davies
 22 July 2017

*This information is believed to be current and correct but is provided without any warranty expressed or implied.
 Customers are advised to determine in advance the safe conditions of use for this product.*

HPLC Chromatograph

MG-LZ8mushroom 245nm 0.5 flow

Print Time: 2017/07/20 03:33:02 PM
 File: C:\Clarify\Data\Gen mushroom 245nm 0.5 flow.cdf



Method for Mushroom Guru

Column and size: Luna 5 µm C18, 150 x 4.6 mm
 Flow: 0.5mL/min
 Detection: UV 245nm
 Mobile phase: Methanol 90% (containing 0.5% acetic acid) : Water 10%